

# *Heritage Photographs*

*Series 3*

*Historic Paterson*

*New South Wales*



*Picnic on the bank of the Paterson River in 1907 - a favourite outing for the young and old folk of the district.*

*Text and Photographs selected by*

*Pauline Clements*

*Edited by Kathy Lyall*

*Published 2008 by Paterson Historical Society Inc.*

*with financial assistance from*



# *Heritage Photographs*

## HISTORIC PATERSON NEW SOUTH WALES

### First Land Grants 1821

Following the success of "Heritage Photograph Series 1 and 2 of Historic Paterson, New South Wales" Series 3 has been collated in response to the obvious interest in this beautiful part of the Hunter Valley.

As early as 1811 a few small farms were established at Paterson Plains with first white settlement at 'Old Banks' on the river near Tocal where convict gangs cut and floated cedar logs down the river. First lands grants were in 1821 and in 1833 the town of Paterson was surveyed. European influence quickly spread and Paterson became one of the earliest settled areas on the Australian mainland. A further subdivision in 1840 formed the southern part of the village and in 1885 Paterson was proclaimed a town.

Paterson continued to prosper as a centre of law and river trade until the coming of the railway in 1911. This event made a dramatic change and Paterson settled into its tranquillity of today.

Since the formation of the Paterson Historical Society in 1974, when the nucleus of the photographic collection was collated, a steady stream of photographs has been donated by residents of Paterson, descendants of pioneer families and visitors to the Paterson Court House Museum.

### **Research Committee**

Mary and Maurice Dunlop, Cameron Archer, Pauline Clements, Kathy Lyall,  
Shirley Threlfo, Jack Sullivan, Val and Bill Anderson, Mabs and Bill Keppie, Virginia Danials,  
Robin Stevenson, Val Patfield

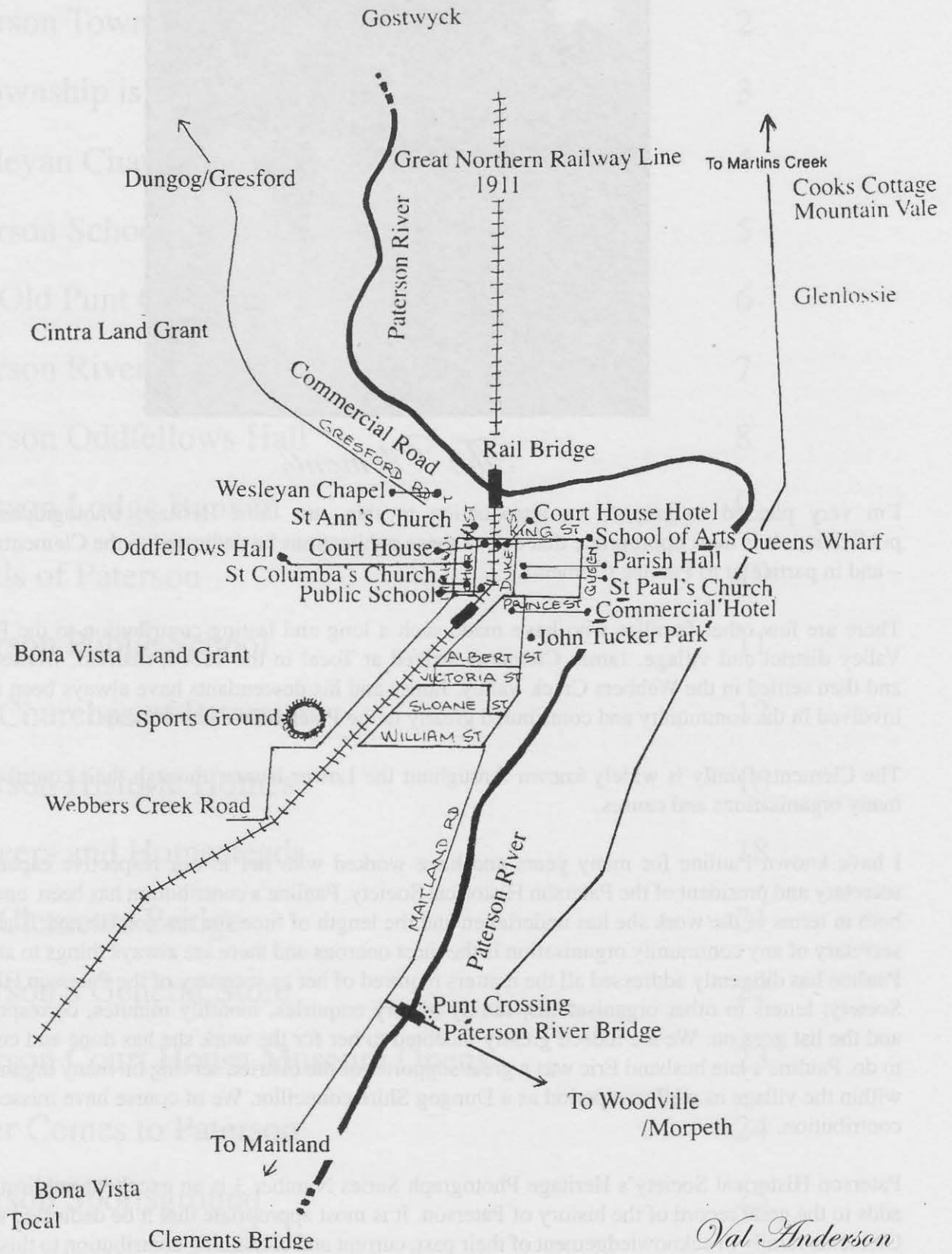
Published by Paterson Historical Society Inc.

Post Office, Paterson 2421

2008

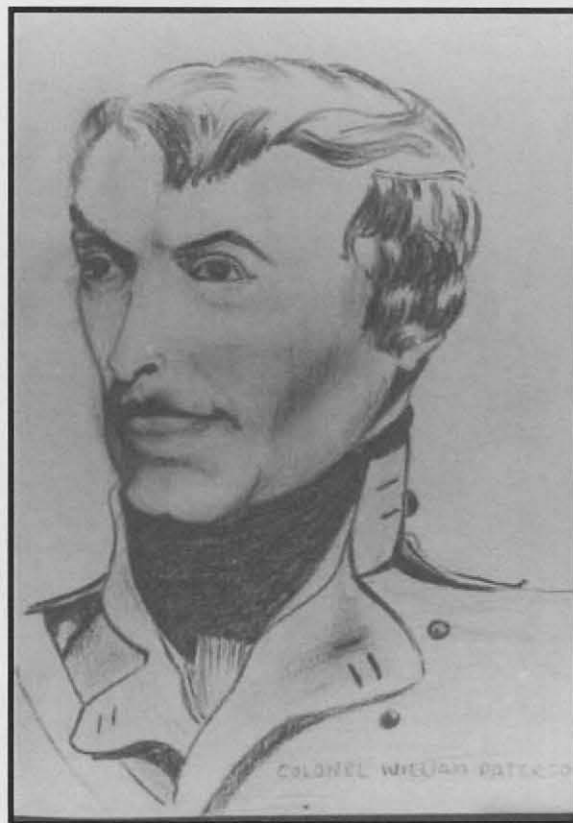
ISBN 0975849174

# Paterson Town Map



Val Anderson

## *A Township is Born*



*Colonel William Paterson*

Artist Unknown

LIEUT COLONEL WILLIAM PATERSON was in charge of a government party which had been sent to the recently discovered harbour of Newcastle in 1801 to evaluate the timber and coal found there. He, with a party of sailors in a small boat, sailed on to the mouth of a large river (which he named the Hunter) and as far as the junction with another river. This was the first sighting of the rivers entering the Hunter to flow onto the Newcastle Harbour - they were named the Williams and the Paterson.

The river banks were rich in cedar, and convict camps were established on the Paterson River to cut the trees and float the logs down river to the harbour, and thence to Sydney by boat for the urgently needed timber in the construction work being carried out in the Colony. By the 1820's the land had been surveyed and grants made to wealthy English gentlemen, who with their convict allotments of labour, opened up the district for wider settlement over the next years. The first major land grant was made in 1822 to James Webber who named his grant Tocal. In 1833 the site of the Paterson Township was laid out and in May 1835 an auction sale of the town allotments in the streets named in memory of the Royal Family in England was held, with all lots being eagerly bought. And so a township was born!

# Wesleyan Chapel and Commercial Road



*Paterson c 1860*

*Courtesy - Jack Sullivan*

An early photograph showing the Wesleyan Chapel which functioned in Paterson from the mid 1800's. Situated in an area below the Presbyterian Church, between the road to Gresford (left-hand side of photo) and Commercial Road along the Paterson River, the church building was eventually destroyed by the 1875 flood.

# *Paterson School of Arts*



Official opening of the newly built Paterson School of Arts in 1885. This building would serve the community until 1935 when the School of Arts building we know today was opened.



The old School of Arts building was sold to Mr George Williamson and converted to a residence,



Present Day School of Arts

Opened 1935

# The Old Punt Crossing



The old punt crossing of the Paterson River linking with the road to Morpeth through Woodville. Road building was completed in 1844. The punt was privately operated at first, but then operation was take over by the District Council.

# Paterson River Bridge



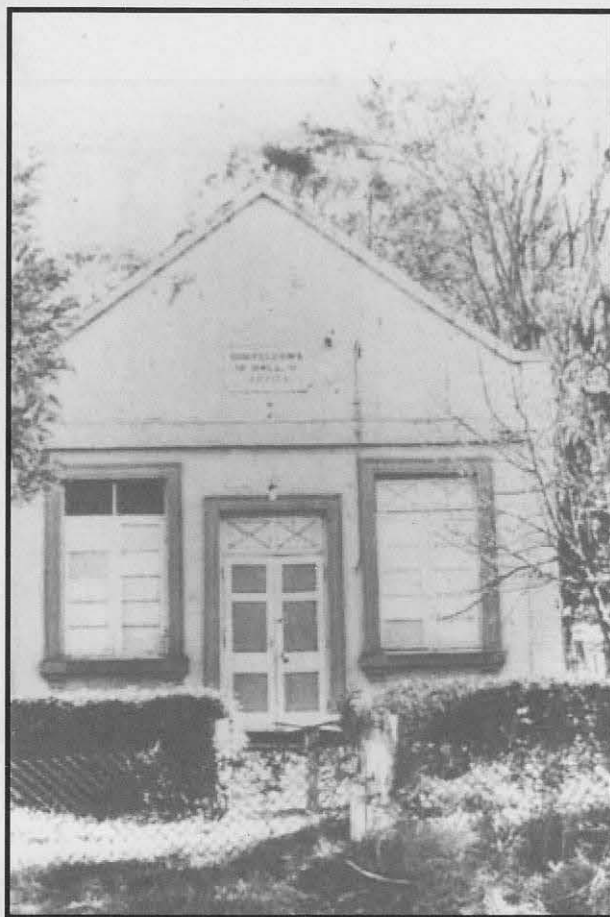
MHR in a grand ceremony attended by the Mayor of Maitland and other dignitaries. The bridge was one of the first four built in New South Wales to a new design of steel and concrete all of which still stand in constant use today.



Remains of the old Queens Wharf at the end of Prince Street, this small wharf served the Paterson village as a public wharf until the new wharf was built by the government in the mid 1880's. No trace of this wharf remains today.



# Paterson Oddfellows Hall



*Lodge Rooms built by the M.U.F.O.F at Paterson 1865*

The Lodge had been in existence in Paterson since 1846 and had previously met in various places in the town. As well as a meeting place for Lodge members, the building served the community as a school room until the first Public School building was completed and at various other times when the school population increased ( e.g. when the rail line was being built through the town and the population increased as the work gangs moved north). The lodge closed in 1975 owing to the small membership and the building was sold to become a private residence.

# *The Paterson Lodge Banner*



*The Paterson Lodge Banner*

The LODGE BANNER was purchased from TUTILLS of London in 1901 for Lodge ceremonies. The banner is believed to be the only surviving one of its type in Australia. It was given to the historical society when Lodge activities were moved to Maitland in the late 1970's it was in a very fragile condition and its restoration was estimated at \$9,500. With Grants from the NSW Ministry of Arts, the NSW Dept of Urban Affairs & Planning Heritage Assistance Program and a donation from the MUIOOF Headquarters, the necessary work of restoration was carried out in Sydney, and the banner returned to the Society in its near-new condition. It now hangs from the ceiling of the Court Room in the Court House Museum preserved in a clear case and attracts wide interest from the many visitors to the museum.

## The Hotels of Paterson



*The Court House Hotel*



*The Commercial Hotel*

Paterson was well known in the early 1920's as an ideal holiday venue with features such as *Easy Travel by Rail* to the town, picnics by the river, tennis and other sports. Social entertainments in comfortable hotel accommodation were features used to advertise Paterson as a holiday town.

# *Paterson Public School*

1877



*Paterson Public School*

The Public School was established in 1875 but the building of the school did not commence until 1876 when a one and half acre block of land was purchased. The pupils commenced their classes in the Oddfellows Hall across the street. The size of the school ground was almost halved when the land was resumed for the Great Northern Railway Line passing through Paterson in 1911.

# *The Churches of Paterson*

## *St Paul's Anglican Church*

*1845*



St. Paul's Anglican Church was built in 1845 under the guidance of the first rector Rev John Jennings- Smith ( and mostly at his own expense). The building remains unaltered with only the necessary repairs carried out over the years. Ramp and hand rails were added in 2006.



The tiny building on the corner of King and Duke Streets was built by the first rector of the Parish, Rev John Jennings-Smith soon after he arrived in 1839 and served as the first church, school and general meeting place for the community until 1896 when the land was purchased by the Commercial Banking Company of Sydney.

# The Churches of Paterson

## St Paul's Anglican Church

1845



The cemetery in the grounds of St. Paul's Church was the town burial ground for more than 100 years and is the final resting place of the pioneers of the district. The graves of many small children, women who died in child-birth and the accidents that befell the men of the families tell of the hardships and uncertainty of life in those early days but it also tells of the long lives lived by many of the pioneers. A place that attracts many visitors looking for family connections from the earlier days.



THE PARISH HALL was built in 1896 with the proceeds of the sale of the site of the old school/meeting place on the corner of King and Duke Streets which had served by the community since the early 1840's.

The Parish Hall was blessed and officially opened on Thursday 28th March 1896 by the Bishop of Newcastle, Bishop George Stanton.

# The Churches of Paterson

## St. Anne's Presbyterian Church 1842



St. Anne's Presbyterian Church which was officially opened in August 1842 served the community well for more than 160 Years has now closed its doors. A bell cover at the front of the church was added in the late 1990's.

# The Churches of Paterson

St. Columba's Roman Catholic Church

1884



The Church was built in 1884 at a cost of £400.00 and consecrated as part of the Gresford Parish. After 100 years of continuous use, the church was extensively renovated in 1984 at a cost of \$32,000 and celebrated the re-opening of the building with a special service and lunch on Sunday 23rd December 1984. The original old church bell was rung on this occasion and then given to the Court House Museum for use on special occasions and display.



# "Gostwyck"

Martins Creek

1876



## "Gostwyck"

George Priestley and family at the homestead entry.

The Gostwyck property, one of the first land grants in the district was made to Edward G Cory in 1823. It remained in Cory Family ownership until 1876 when it was purchased by Mr. John Ponsford Luke who demolished the original Gostwyck house and had the new home built within the first year of becoming the owner. Mr Luke died in 1889 and the property was sold to Mr Theophilus Cooper who resided on the property until 1903. In August of that year an auction sale was held at the Court House Hotel, Paterson and the property again changed hands. The new owner was Mr George Priestley and the property remains with that family to this day.

# *"Bona Vista"*

*Paterson*

*c 1876*



## *Bona Vista Homestead*

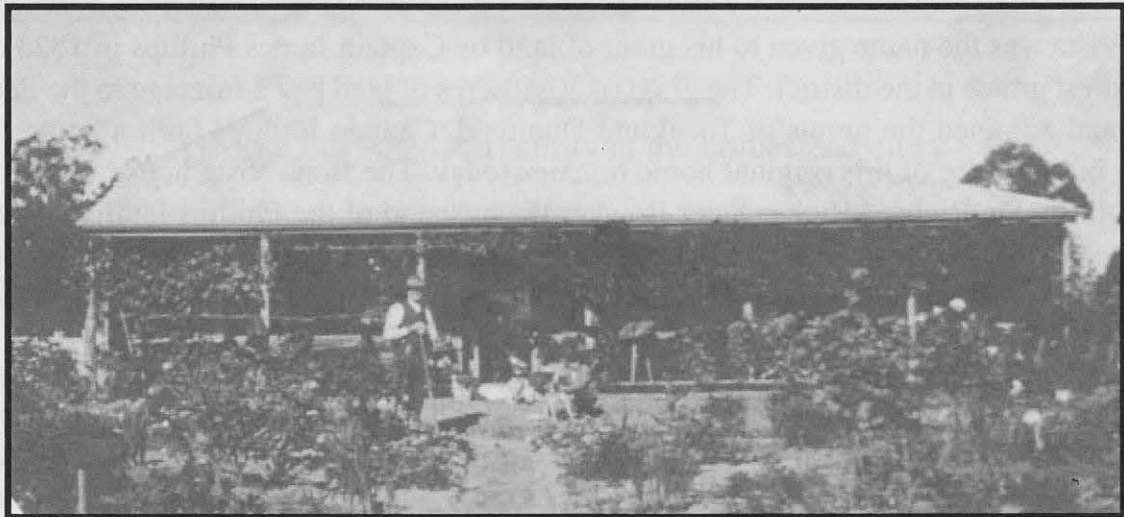
Bona Vista was the name given to his grant of land by Captain James Phillips in 1823 one of the earliest grants in the district. The grant of 2090 acres of land had a frontage to the Paterson River and adjoined the grants of Tocal and Duninald. Captain Phillips built a home for his family but no trace of this original home remains today. The Bona Vista house we see today was built by Dr. Richard Ryther Steer Bowker the husband of the Phillips family's youngest daughter Lydia, about 1876. Over the years the property has changed hands several times. The house was in great disrepair when the property was acquired by the State Government in 1974 to become part of the complex we know today as Tocal Agricultural College. After many months of restoration work the house is once again a landmark in the district.

## *Pioneers and Homesteads*



*First Glenlossie Cottage Paterson*

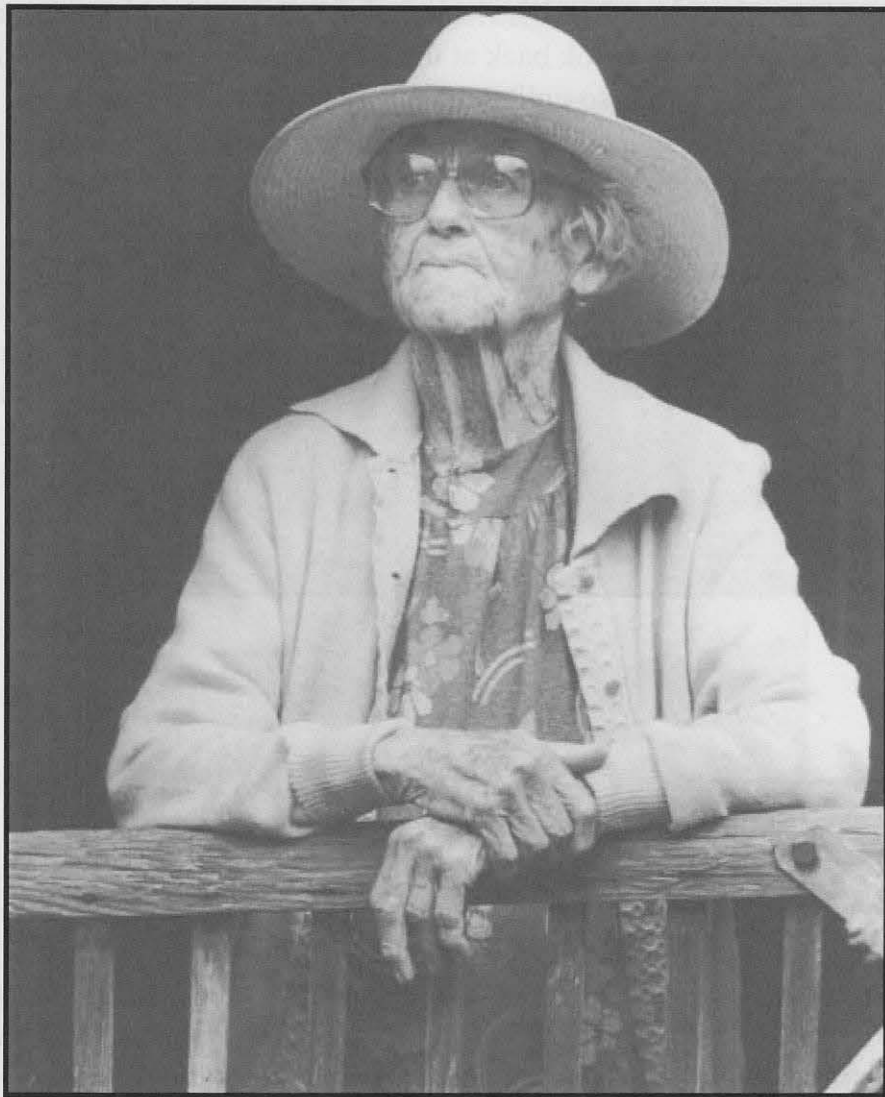
The first Glenlossie cottage, home of the earliest members of the Keppie Family to settle in the Paterson area has been demolished for many years but every spring the remains of the cottage garden appear.



*Glenlossie Homestead*

The facade of Glenlossie remains little changed from when it was built c1903

*Pioneers of the District*



*Catherine Allie Asplund*

*1909 - 1994*

The district lost one of its oldest residents when Mrs Catherine Allie Asplund, of Martins's Creek, passed away on January 12th 1994. Mrs. Asplund was the daughter of James Edward Cook whose parents had pioneered the Martin's Creek area in the 1860's when land became available for selection. Born at Martin's Creek, Mrs Asplund attended the first Martin's Creek school established in 1892 in Martin's Paddock on Black Rock Road. Mrs Asplund was the oldest former pupil present when Martin's Creek celebrated its Centenary in 1992 and had the honour of cutting the Centenary Cake. Mrs Asplund's husband was Eric Gustav Asplund who worked on the railway all his life and pre-deceased his wife. Mrs Asplund's family consisted of four sons and a daughter. A proud and independent spirit kept Mrs Asplund living in Cook's Cottage surrounded by her treasures of days gone by and satisfied by the simple ways of yester-year.

# *The Robinsons of Martin's Creek*

The life-stories of the pioneers of the district are now being told with pride as descendants of these sturdy men and women look back at the way their forebears battled the difficulties of settling into a new way of life so unlike the one they knew previously.



## *Mountain Vale - Martins Creek*



Charles and Ann Robinson

Charles was a saddler by trade and after leaving England in 1850 he travelled to South Africa expecting to find work there, but was dissatisfied with what he found. He traveled to Tasmania and the Victorian goldfields and finally to Sydney where he worked at his trade for some time. In 1860 Charles and his growing family settled on a property at Martins's Creek, and began a farming life, bringing their farm into production from virgin bushland. Charles continued to work as a saddler, whilst his sons managed the farm. Mrs. Robinson was a well - known mid-wife in the Paterson District.

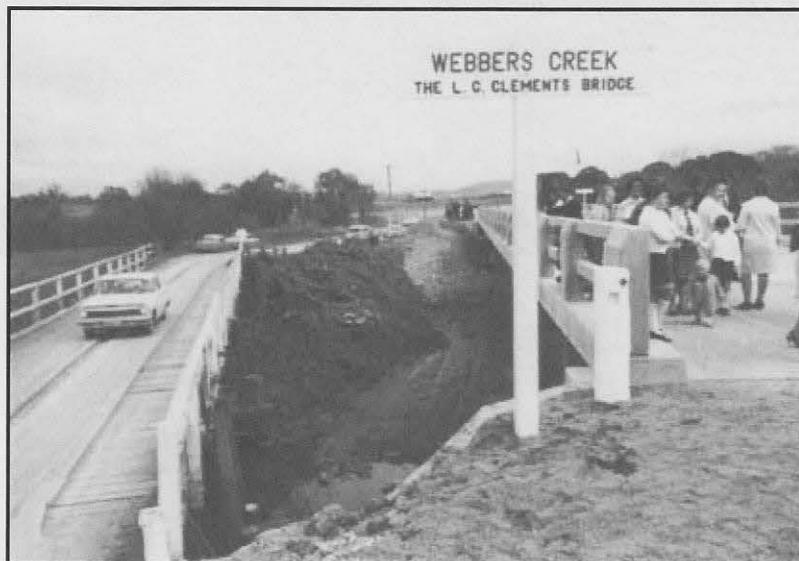


Ann Robinson with son Joseph prior to her death in 1917.

# *The L G Clements Bridge*

## *Webbers Creek*

Total Bridge Total Road was upgraded and tar - sealed in the 1950's but it was not until there had been several fatal accidents at the narrow wooden bridge over Webbers Creek that Dungog Shire Council was granted money from the State Government to construct a new bridge in 1965. The new bridge was officially opened on Saturday 8th July, 1967 by Mr. Milton Morris, then Minister for Transport and the local council representative. Leslie Gilbert Clements, naming the bridge the L.G. CLEMENTS BRIDGE. Mr Clements had served the community as the town representative for more than 25 years on the Lower Hunter, Bolwarra and Wallarobba Shires before Paterson became part of the Dungog Shire. Mr Clements collapsed following a heart attack and died that same evening.



Mr Leslie Clements and Mr Milton Morris at the opening ceremony.

# *Paterson General Store*



*Paterson General Store  
King Street  
Paterson*

Situated at the Junction of King and Duke Streets Paterson the building was erected in the mid 1800's by the well known Cann family of that time and served the community for all their needs. The store carried a wide variety of all house-hold items needed before the days of super-markets and served the widespread community as well. Alex and Clara Bevan and their young family were the popular owners when the business was destroyed by fire in 1961. The shop was never re-built and the site remains empty to this day.

# *Paterson Court House Museum Opens*



Mr & Mrs Milton Morris at the opening of the Court House Museum in 1974. The impressive building dated 1858 - 61 replaced a slab facility at the rear built in 1835. The Paterson Court closed in 1967 and re-opened in 1974 as a rural museum. The small number of members of the newly formed Society had worked hard to have all ready for this event. Photographs and other memorabilia had been collected and were on display. Many members of the community had loaned photographs and old items of houseware, tools and bric a brac to build a display and members of the Society dressed in period costume for the day. Many visitors attended the opening day. The Court Room itself was just as it had been left when the last case was heard. It was due to the representations and keen support from the local member Mr Milton Morris that the flag draped on the canopy over the Magistrates Bench should be left in place. And so it remains today, giving the Court Room a real feel of authenticity.



# *Water comes to Paterson*



## *John Tucker Park*

On the corner where Duke Street, Paterson becomes Maitland Road there is a small block of Martin's Creek blue metal stone, a drinking bubbler, and seats for the weary walker. On the stone block is a brass plaque commemorating the supply of water from Chichester Dam to the town of Paterson and the surrounding district. On 3rd May 1980 the water supply was officially turned on by the Deputy Premier of NSW Mr Jack Ferguson. Also attending was Mr Milton Morris then State Member for Maitland, Mr John Hawley, Dungog Shire President and the Paterson representative on the Council, Mr Stan Priestly.

# Paterson Sports Ground



*Entrance Gates*



*Sports Oval*



*Tennis Courts*

Paterson Sportsground, formerly known as Paterson Park consisted of almost 84 acres when it was purchased by the Colonial Government in 1879 for the sum of 500 pounds for use as a recreation ground for the residents of the township. In 1908 an area of a little over 10 acres was resumed by the government to provide space for the Great Northern Railway line then being constructed. Over past years the park has been a race course, playing fields for cricket and football and tennis courts which were built in the early 1920's. Today new tennis courts have been constructed for a thriving club, a golf course has been laid out and boasts a large number of club members, the cricket club continues to attract new young players each year and a netball field has been laid out.

# *Pauline M Clements*



Pauline M Clements offering a tribute to the late Henry Francis ( Harry ) Boyle, A O M  
at the launch of “ An Album of Tributes”  
25th November 2006.

St Annes Presbyterian Church Paterson  
Pauline Clements was awarded the Federation Medal  
in 2000 for services in the community

