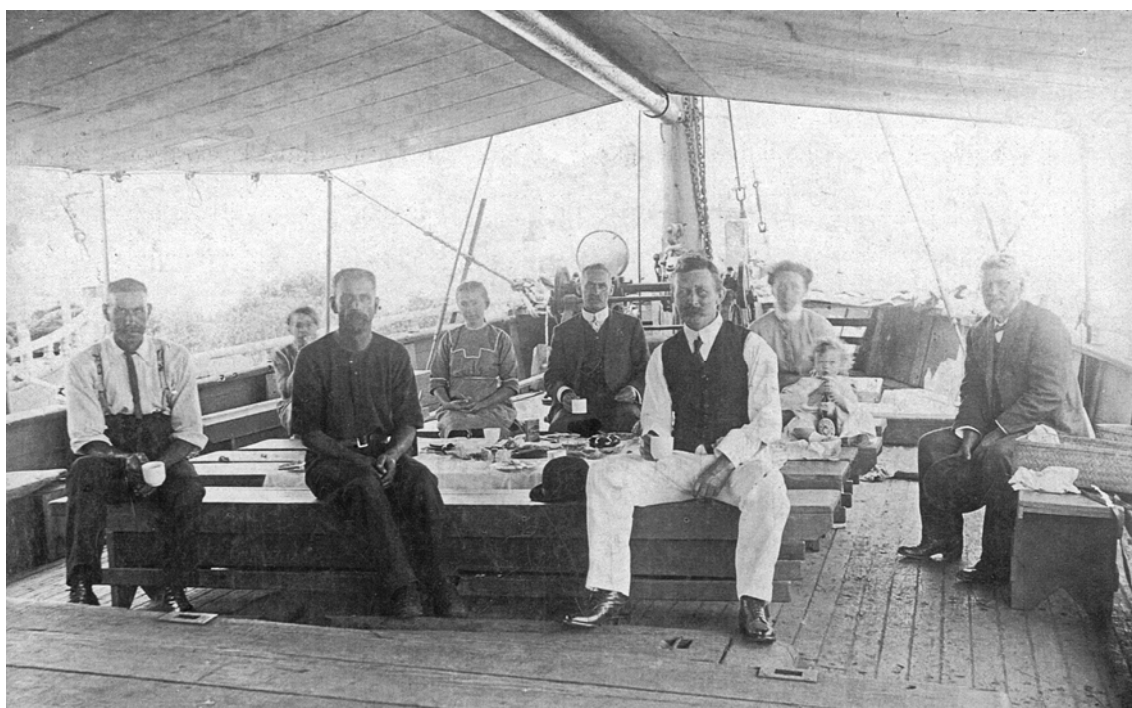


Contents

Acknowledgements.....	vi
Preface	vii
Introduction.....	2
Steamships	7
SWPS “Ability”	8
SS “Acme”	9
SS “Adeline”	10
SS “Advance”	11
SS “Aggie”	12
SS “Agnes”	13
SWPS “Allyn”	14
TSS “Allyn River”	15
SWPS “Anna Maria”	16
SS “Aquarius”	18
SS “Berlinda”	19
PS “Betsey”	20
SWPS “Bolwarra” mk. 1, mk. 2	21
SS “Bowra”	22
PS “Brothers”	23
SS “Buller”	24
SWPS “Burwood”	25
SWPS “Canaipa”	26
TSS “Carbeethon”, later renamed TSS “Stanley”	27
SS “Centennial”	28
SS “Cobar”	29
SS “Commerce”	30
SWPS “Commissary General”	31
PS “Daisy”	32
SS “Daisy”	33
SS “Dauntless”	34
SS “Doorebang”	35
SS “Duncan E McBryde”	36
SS “Edith”	37
SS “Elaine”	38
SS “Ellen Taylor”	39
SS “Essex”	40
SS “Ethel”	41
SS “Etna”	42
SS “Etria”	43
PS “Experiment”	44
SS “Express”	45
PS “Giraffe”	46
SS “Grace”	47
SS “Guthrey”	48
TSS “Helen”	50
PS “Hunter”	51
PS “Huntress” mk. 2	52
SS “Iona”	53
SS “Kate”	54
TSS “Kuring Gai”	55

TSS “Kurnell” “Biloela” “Romantic”	56
SS “Lily” (no. 1)	57
SS “Lily” (no. 2)	58
SS “Magdalene”	59
SS “Magic”	60
PS “Maitland” mk. 1	61
SS “Marie”	62
SS “Matilda”	63
SS “Myall”	64
SS “Myall River”	65
SS “Naiad”	66
PS “Native”, later renamed “Maid of the Mill”	67
PS “Nellie”	68
SS “Nelson”	69
SWPS “Norman”	70
SWPS “Pasha”	71
SWPS “Patterson”	72
SS “Pearl”	73
SS “Perseverance”	74
SS “Pinafore” (no. 1)	75
PS “Pioneer”	76
SS “Planet”	77
PS “Raven”	78
SS “Ripple” mk. 1	79
SS “Ripple” mk. 2	80
SS “Ripple” mk. 3	81
SS “Rose”	82
SS “Ruby”	83
SS “Sappho”	84
SS “Shamrock” mk. 1	85
SS “Shamrock” mk. 2, later renamed SS “Wattle”	86
SS “Shelbourne”	87
PS “Sophia Jane”	88
SWPS “Stanley”	89
SWPS “Stockton”	90
SS “Tahlee”	91
PS “Terara”	92
SS “Tomago”	93
TSS “Vaucluse”	94
TSS “Waraneen”	95
SWPS “Water Lily”	96
PS “William the Fourth”	97
SS “Wyalong”	98
SWPS “Yaamba”	99
Addendum – punts/vehicular ferries	100
Introduction and notes on Hinton Slipway	100
Overview of punts on the Paterson, Hunter and Williams Rivers	101
Punt at Gostwyck (Paterson River)	102
Punt at Paterson (near current road bridge)	103
Punt at Old Banks, Patersons Plains	104
Punt at Dunmore/Woodville	105
Punt at “Wallalong”	106
Punt at Hinton	107

Addendum – motor launches, motor vessels and dredges	109
ML “Bowthorne”	109
ML “Evelyn”	110
ML “Florence”	111
ML “Penshurst”	112
ML “Swan”	113
MV “Azile”	114
MV “Barbara”	115
MV “Lady Joy”	116
MV “Lady Patina”	117
Dredging on Paterson River 1893 to 1921	118
Grab Dredges “Delta”, “Omicron”, “Omega” and “Upsilon”	119
Hopper dredger TSS “Antleon”	120
Hopper dredger TSS “Tethys”	121
Steam lighter “Powerful”	122
Tug for barges SWPS “Katie”	123
Tug tender SS “Little Nell”	124
Barge “Arthur”	125
Barges “FT2” and “FT3”	126
References	127
Index	128



The author's great uncle, Captain Herbert Patfield, with his crew and family onboard SS Marie at Paterson. Front row L to R: George Garnham, Wal Martin, Captain Patfield, David Loger (engineer).
(Paterson Historical Society, Wayne Patfield collection)